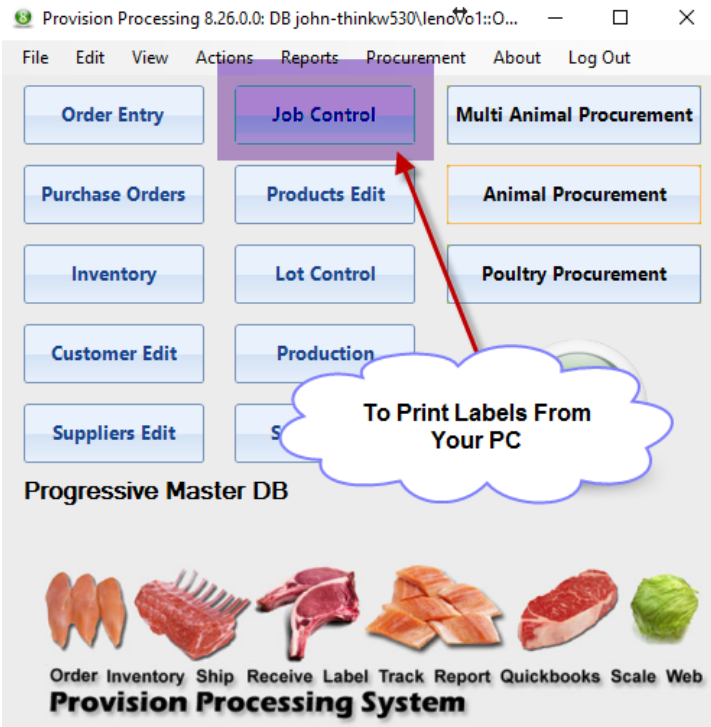


How to print labels from your PC using PPS



Job Lot Edit

Scale Group: Default

Enter Job Lot View Edit Jobs Lots

Add a Job/Lot

Job/Lot #: 153093094 Suggest Desc: test123

Available Date: 11/ 5/2015 Hide Date: 11/ 4/2016

Product Group: Organic Belcampo Beef Filter: By Desc By #

Product: Beef C/C Filet Steaks 6 oz Select 6644061

Location: 1default

Scale: Test Office Plant: 2-Center2 Make Date: 11/ 5/2015 Items/Skid: 1

Processed In: 1None Product of: 1None Type 1: Famed


Customer: 0001 CustomertestBB Use

User1: User2:

Print Labels

Label Format: 4x4 Standard Meat Print Label

Save Add New Job/Products will be added. Existing Job/Product combinations will be updated

 Print Job Labels

Job Lot Number
153093094

Part Number
6644061

Beef C/C Filet Steaks 6 oz Select


Total Cases
1

Weight
14

Items Per
1

Printer

Production Room



Labeling

☐ Pallet Label Only

☐ Pallet And Case Labels

☒ Case Label Only

Enter the number of cases you want to print. Then weight. Items per is how many boxes per pallet. If you select pallet and case labels then the system will print "items per" cases then print a pallet.

Next select the printer and how you want the labels under Labeling